

*We Shape Wood & More*

**MAWOOX**

**MAWOOX**

OUTDOOR FABRIC  
COLLECTIONS 2023

MAWOOX selections

[www.mawoox.com](http://www.mawoox.com)



**MAWOOX** – We shape Wood & More

[www.mawoox.com](http://www.mawoox.com)

江苏玛沃珂装饰工程有限公司  
常州市金坛区华成路 222 号 11 楼

# 100% OUTDOOR FABRICS

百分百室外面料



Indoor  
室内



Outdoor  
户外



Shade  
遮阳伞

## 100% Solution-Dyed Polypropylene / Olefin色织布

Abrasion test/磨损  
(ASTM D4157 in Rubs) > 8000

Water repellent/泼水度 80%  
(AATCC 22-2005, max 100)

Pilling/起球  
(ISO 12495-2 5000 Revolutions) 4-5  
(ASTM D4970 1000 Moments) 4-5

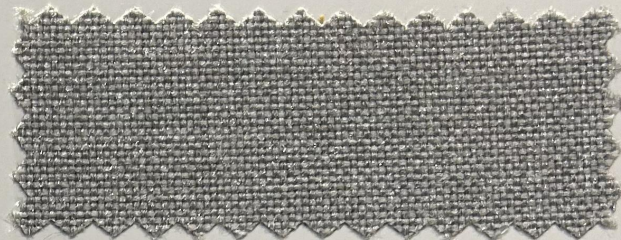
UPF Testing/紫外线保护系数 50+  
(AS/NZS 4399-1996) (Actual rating >500)

Colour Fastness to Light/日光牢度  
(AATCC 16-2004, Option 3 Grey scale) >Class3.0@800hrs  
(ISO 105-B02:2014 Blue wool ref.) 7

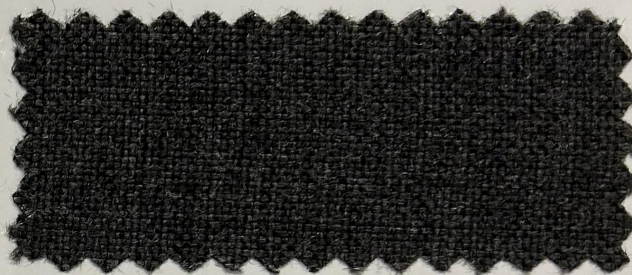
CA Technical Bulletin 117-2013/美标防火 PASS  
Flammability BS 5852/英标防火 UPON REQUEST



15228500 152cm 200g/m<sup>2</sup>(±10%)



15228499 152cm 200g/m<sup>2</sup>(±10%)



15228498 152cm 200g/m<sup>2</sup>(±10%)

# 100% OUTDOOR FABRICS

百分百室外面料



Indoor  
室内



Outdoor  
户外



Shade  
遮阳伞



Hospitality  
酒店工程

## Solution-Dyed Poly mix Sling / Textilene色织布

Abrasion test/磨损  
(ASTM D4157 in Rubs) > 25000

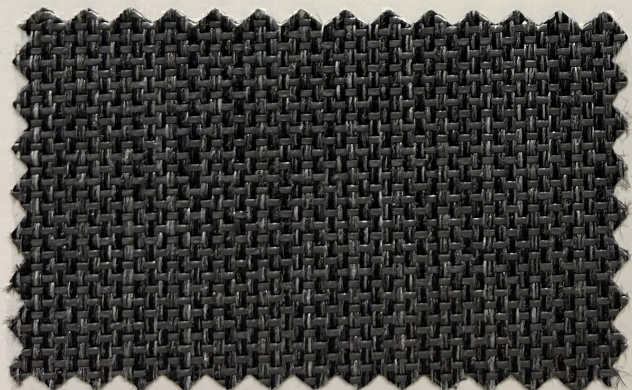
Water repellent/泼水度 80%  
(AATCC 22-2005, max 100)

Pilling/起球  
(ISO 12495-2 5000 Revolutions) 5  
(ASTM D4970 1000 Moments) 5

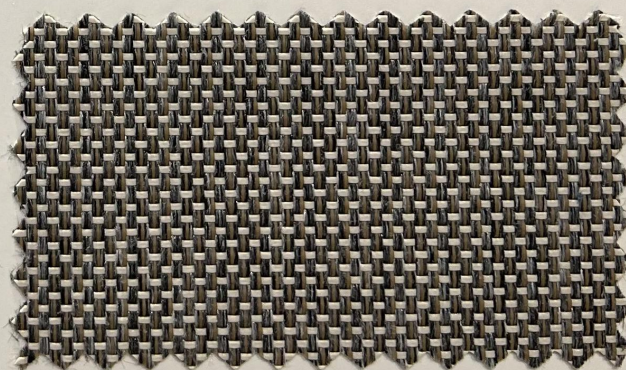
UPF Testing/紫外线保护系数 50+  
(AS/NZS 4399-1996) (Actual rating >500)

Colour Fastness to Light/日光牢度  
(AATCC 16-2004, Option 3 Grey scale) >Class4.0@1500hrs  
(ISO 105-B02:2014 Blue wool ref.) 7-8

CA Technical Bulletin 117-2013/美标防火 PASS  
Flammability BS 5852/英标防火 UPON REQUEST



15238555T 152cm 480g/m<sup>2</sup>(±10%)



15238554T 152cm 480g/m<sup>2</sup>(±10%)

All data are based on the average ratings; different colors/styles may vary.  
所有数据为实验室与第三方检测机构平均技术数据。

# 100% OUTDOOR FABRICS

百分百室外面料



Outdoor 户外    Commercial 酒店工程    Decor 装饰材料

## 100% Dyed Solid Polyester / 纯色涤纶布

Abrasion test/磨损 (ASTM D4157 in Rubs) > 15000

Water repellent/泼水度 (AATCC 22-2005, max 100) 90%

Pilling/起球 (ISO 12495-2 5000 Revolutions) 4-5  
(ASTM D4970 1000 Moments) 4-5

UPF Testing/紫外线保护系数 (AS/NZS 4399-1996) 50+  
(Actual rating >500hr)

Colour Fastness to Light/日光牢度 (AATCC 16-2004, Option 3 Grey scale) >Class3.0@200hrs  
(ISO 105-B02:2014 Blue wool ref.) 5

CA Technical Bulletin 117-2013/美标防火 PASS  
Flammability BS 5852/英标防火 UPON REQUEST



15815002    158cm    285gsm(±5%)



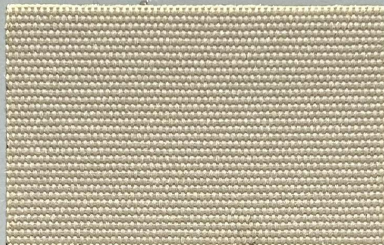
15815807    158cm    285gsm(±5%)



15815806    158cm    285gsm(±5%)



15815305    158cm    285gsm(±5%)



15815808    158cm    285gsm(±5%)



15815809    158cm    285gsm(±5%)



15815530    158cm    285gsm(±5%)



15815810    158cm    285gsm(±5%)



15815811    158cm    285gsm(±5%)



15815834    158cm    285gsm(±5%)



15815042    158cm    285gsm(±5%)



15815805    158cm    285gsm(±5%)



15815812    158cm    285gsm(±5%)



15815833    158cm    285gsm(±5%)



15815814    158cm    285gsm(±5%)

All data are based on the average ratings; different colors/styles maybe vary.  
所有数据均为实验室与第三方检测机构的平均技术参数。

# 100% OUTDOOR FABRICS

百分百室外面料



Indoor  
室内



Outdoor  
户外



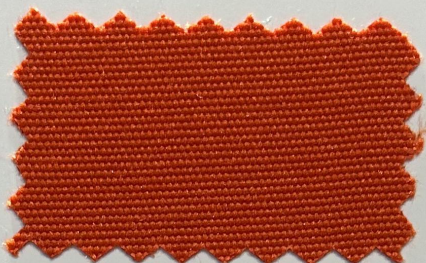
Hospitality  
酒店工程

## 100% Dyed Solid Polyester / 纯色涤纶布

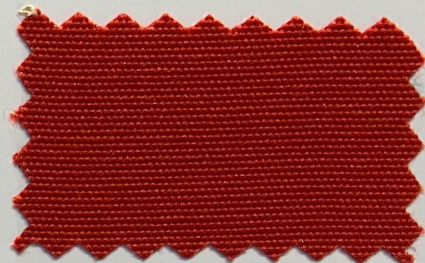
Abrasion test/磨损 (ASTM D4157 in Rubs)	> 15000	Water repellent/泼水度 (AATCC 22-2005, max 100)	90%
Pilling/起球 (ISO 12495-2 5000 Revolutions) (ASTM D4970 1000 Moments)	4-5 4-5	UPF Testing/紫外线保护系数 (AS/NZS 4399-1996)	50+ (Actual rating >500)
Colour Fastness to Light/日光牢度 (AATCC 16-2004, Option 3 Grey scale) (ISO 105-B02:2014 Blue wool ref.)	>Class3.0@200hrs 5	CA Technical Bulletin 117-2013/美标防火 Flammability BS 5852/英标防火	PASS UPON REQUEST



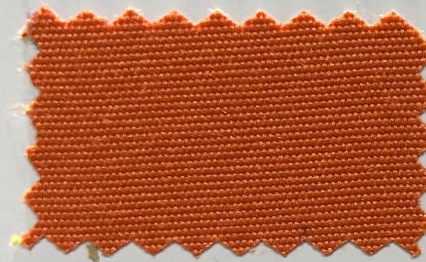
15815801 158cm 300g/m<sup>2</sup>(± 10%)



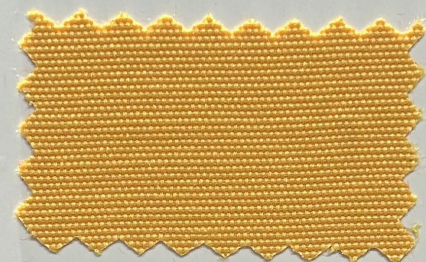
15815823 158cm 300g/m<sup>2</sup>(± 10%)



15815824 158cm 300g/m<sup>2</sup>(± 10%)



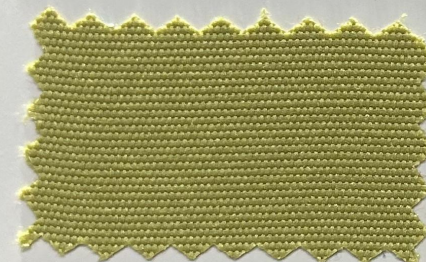
15815802 158cm 300g/m<sup>2</sup>(± 10%)



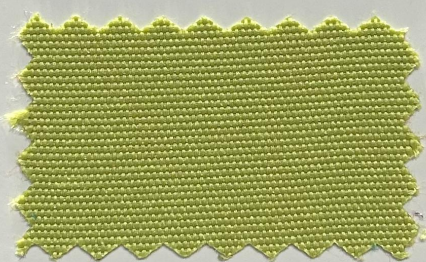
15815804 158cm 300g/m<sup>2</sup>(± 10%)



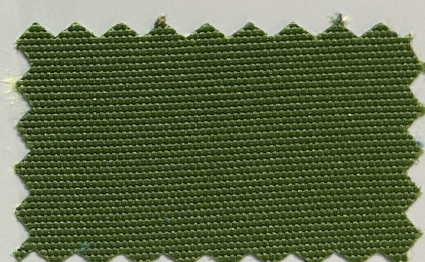
15815850 158cm 300g/m<sup>2</sup>(± 10%)



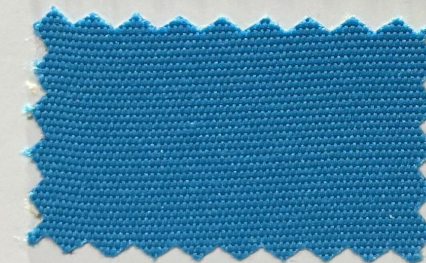
15815803 158cm 300g/m<sup>2</sup>(± 10%)



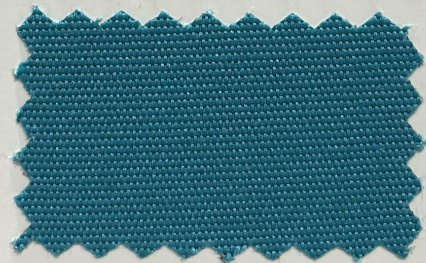
15815822 158cm 300g/m<sup>2</sup>(± 10%)



15815819 158cm 300g/m<sup>2</sup>(± 10%)



15815826 158cm 300g/m<sup>2</sup>(± 10%)



15815817 158cm 300g/m<sup>2</sup>(± 10%)



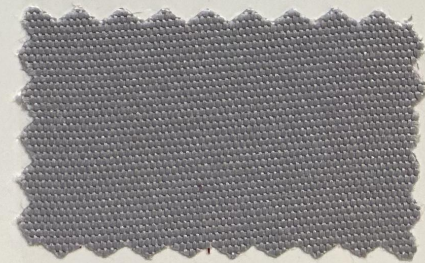
15815820 158cm 300g/m<sup>2</sup>(± 10%)



15815816 158cm 300g/m<sup>2</sup>(± 10%)



15815424 158cm 300g/m<sup>2</sup>(± 10%)



15815806 158cm 300g/m<sup>2</sup>(± 10%)

All data are based on the average ratings; different colors/styles maybe vary.  
所有数据为实验室与第三方检测机构的平均技术数据。

# 100% OUTDOOR FABRICS

百分百室外面料

## 100% Solution-Dyed Polyester / SDP色织布



Abrasion test/磨损 (ASTM D4157 in Rubs)	> 20000	Water repellent/泼水度 (AATCC 22-2005, max 100)	90%
Pilling/起球 (ISO 12495-2 5000 Revolutions) (ASTM D4970 1000 Moments)	4 4	UPF Testing/紫外线保护系数 (AS/NZS 4399-1996)	50+ (Actual rating >500hr)
Colour Fastness to Light/日光牢度 (AATCC 16-2004, Option 3 Grey scale) (ISO 105-B02:2014 Blue wool ref.)	>Class3.0@1000hrs 7-8	CA Technical Bulletin 117-2013/美标防火 Flammability BS 5852/英标防火	PASS UPON REQUEST



15225030 152cm 250gsm(±10%)



15225026 152cm 250gsm(±10%)



15225032 152cm 250gsm(±10%)



15225040 152cm 250gsm(±10%)



15225035 152cm 250gsm(±10%)



15220001 152cm 250gsm(±10%)



15225039 152cm 250gsm(±10%)



15225022 152cm 250gsm(±10%)



15225037 152cm 250gsm(±10%)



15225038 152cm 250gsm(±10%)



15218005 152cm 260gsm(±10%)



15225018 152cm 250gsm(±10%)



15225031 152cm 250gsm(±10%)



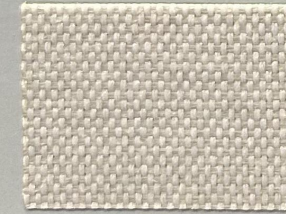
15225041 152cm 250gsm(±10%)



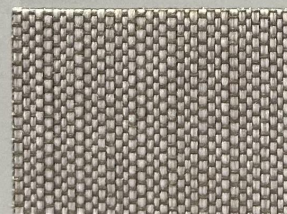
15225028 152cm 250gsm(±10%)



15225020 152cm 250gsm(±10%)



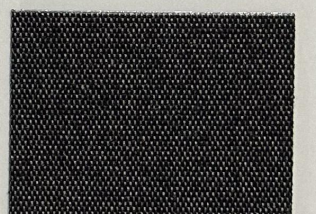
15225060 152cm 310gsm(±10%)



15221134 152cm 280gsm(±10%)



15225033 152cm 250gsm(±10%)



15225056 152cm 250gsm(±10%)



15225053 152cm 310gsm(±10%)



15225059 152cm 310gsm(±10%)



15225050 152cm 310gsm(±10%)



15225055 152cm 310gsm(±10%)

All data are based on the average ratings; different colors/styles maybe vary.  
所有数据均为实验室与第三方检测机构平均技术参数。

# 100% OUTDOOR FABRICS

百分百室外面料



Indoor  
室内



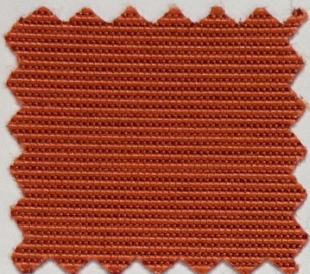
Outdoor  
户外



Hospitality  
酒店工程

## 100% Dyed Tweed Polyester / 混色涤纶布

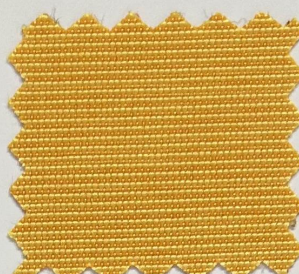
Abrasion test/磨损 (ASTM D4157 in Rubs)	> 15000	Water repellent/泼水度 (AATCC 22-2005, max 100)	90%
Pilling/起球 (ISO 12495-2 5000 Revolutions) (ASTM D4970 1000 Moments)	4-5 4-5	UPF Testing/紫外线保护系数 (AS/NZS 4399-1996)	50+ (Actual rating >500)
Colour Fastness to Light/日光牢度 (AATCC 16-2004, Option 3 Grey scale) (ISO 105-B02:2014 Blue wool ref.)	>Class3.0@400hrs 6	CA Technical Bulletin 117-2013/美标防火 PASS Flammability BS 5852/英标防火	UPON REQUEST



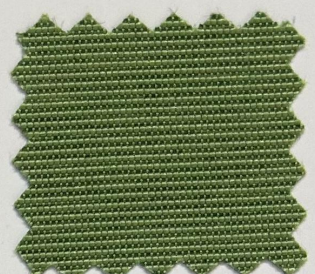
15216085 152cm 240g/m<sup>2</sup>(±10%)



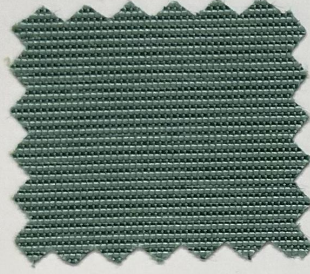
15216091 152cm 240g/m<sup>2</sup>(±10%)



15216090 152cm 240g/m<sup>2</sup>(±10%)



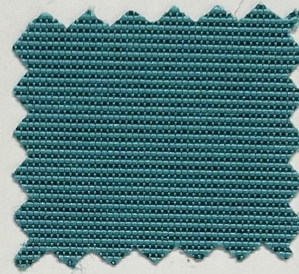
15216092 152cm 240g/m<sup>2</sup>(±10%)



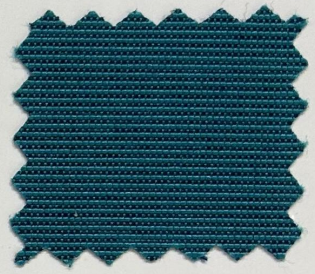
15216088 152cm 240g/m<sup>2</sup>(±10%)



15216086 152cm 240g/m<sup>2</sup>(±10%)



15216143 152cm 240g/m<sup>2</sup>(±10%)



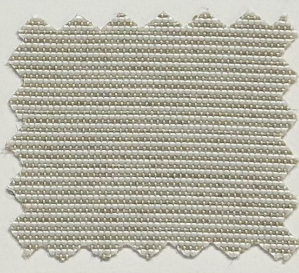
15216095 152cm 240g/m<sup>2</sup>(±10%)



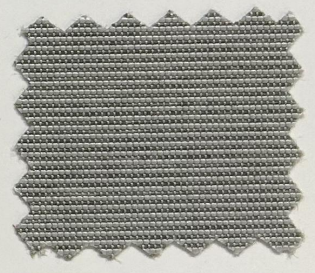
15216041 152cm 240g/m<sup>2</sup>(±10%)



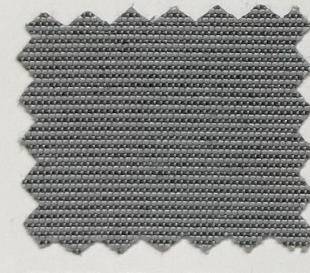
15216142 152cm 240g/m<sup>2</sup>(±10%)



15216141 152cm 240g/m<sup>2</sup>(±10%)



15216145 152cm 240g/m<sup>2</sup>(±10%)



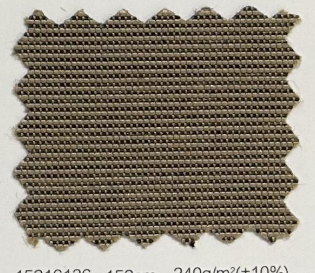
15216144 152cm 240g/m<sup>2</sup>(±10%)



15216140 152cm 240g/m<sup>2</sup>(±10%)



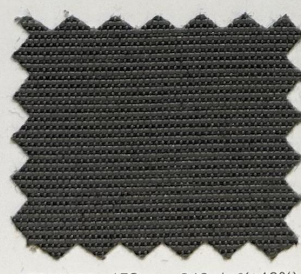
15216135 152cm 240g/m<sup>2</sup>(±10%)



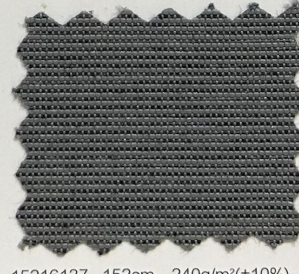
15216136 152cm 240g/m<sup>2</sup>(±10%)



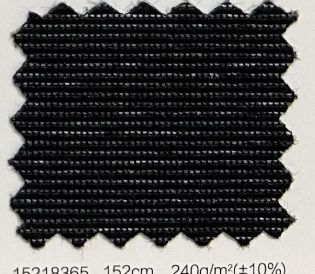
15216138 152cm 240g/m<sup>2</sup>(±10%)



15216139 152cm 240g/m<sup>2</sup>(±10%)



15216137 152cm 240g/m<sup>2</sup>(±10%)



15218365 152cm 240g/m<sup>2</sup>(±10%)

All data are based on the average ratings; different colors/styles may vary.  
所有数据为实验室与第三方检测机构平均技术数据。